

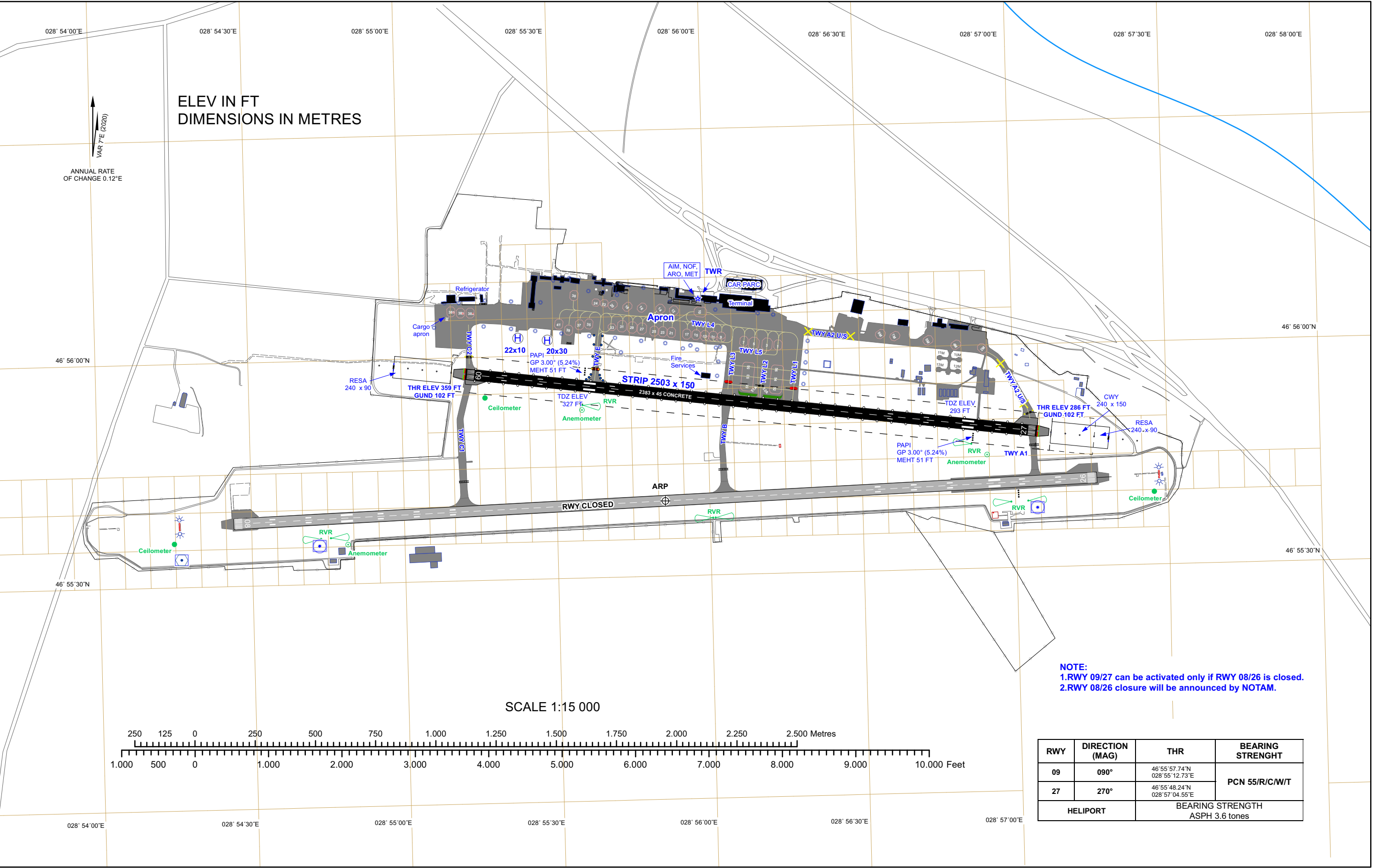
AD ELEVATION
399FT

TOWER: 118.100 MHz
GROUND: 121.800 MHz
APRON: 131.700 MHz

AERODROME CHART - ICAO

ARP: 46°55'40"N
028°55'51"E

CHISINAU / LUKK
RWY 09/27



Changes: Guard Lights Indication on TWY L1, L3 Deleted. Stop Bar Indication on TWY L1, L3, E Added.

PAGE INTENTIONALLY LEFT BLANK